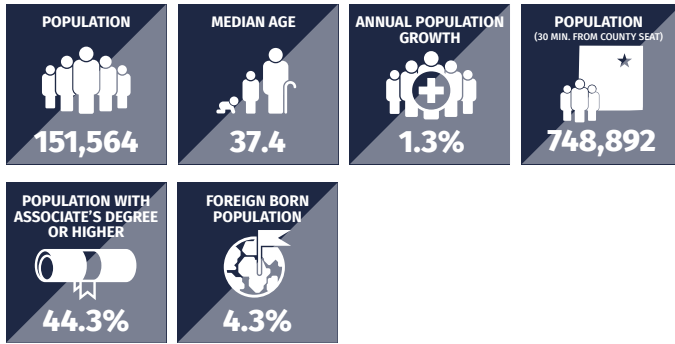


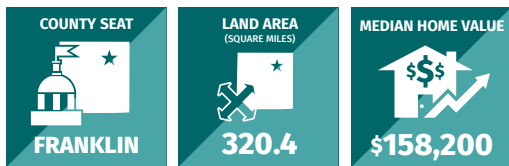
JOHNSON COUNTY

BY THE NUMBERS

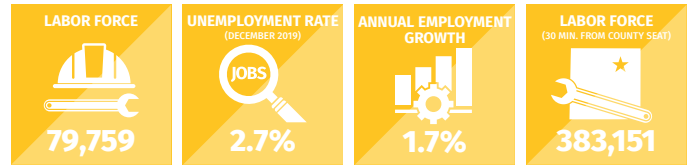
DEMOGRAPHICS



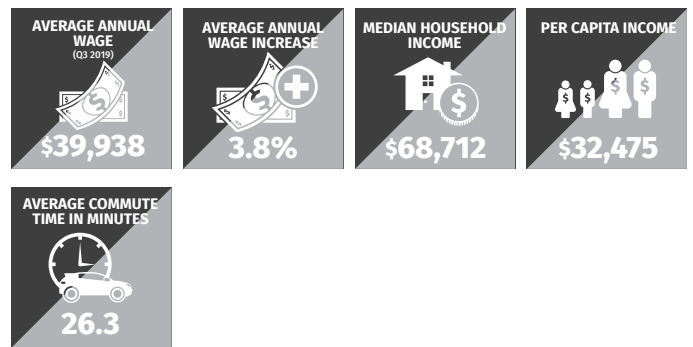
LOCATION



JOBS

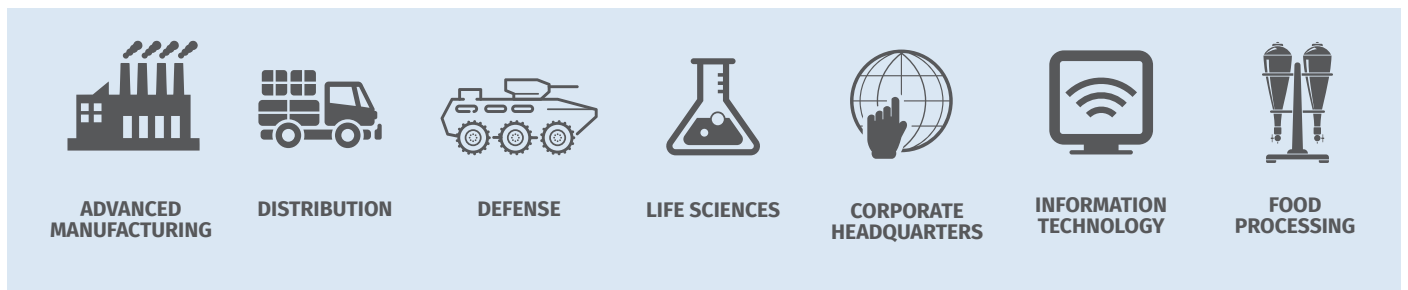


ECONOMY



Source: JobsEQ, 2018

TARGETED INDUSTRIES



LARGEST EMPLOYERS



CONTACT JOHNSON COUNTY

Amanda Rubadue
 Vice President of Economic Development,
 Aspire Economic Development + Chamber Alliance
arubadue@AspireJohnsonCounty.com
 317.537.0037